

CUTTING

MOUNTING

POLISHING

HARDNESS & MICROSCOPY



# MECATOME T202

**POWERFUL. EFFICIENT. ROBUST.**

The new generation precision cutting machine

BY PRESI



# innovate.

THE PRESI SIGNATURE. ALL AROUND THE WORLD.





# MECATOME T202, the new generation precision cutting machine

BY PRESI

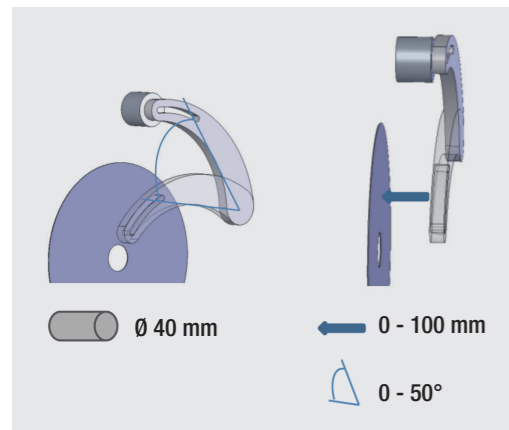
## Precision cutting machine.

The MECATOME T202 is a cutting machine which distinguishes itself by its robustness and compact dimensions. It can cut a wide range of materials, from the softest to the hardest ones.

## Maximum performance.

With a maximum speed of 4000 RPM, the MECATOME T202 works with diamond cut-off wheels as well as resinoids ones. It is perfect for using fine grinding wheels for the highest precision cuts.

## CUTTING ENVELOPE\*



\* This illustration of the cutting envelope of the MECATOME T202 is to show the maximum theoretical capacity only. The actual capacity in practice will depend on the sample geometry and its physical properties.

## Cutting mode

The MECATOME T202 allows two cutting modes:

- Manual
- By gravity (weight, counter-weight)

## UNRIVALED ENGINE POWER

The powerful brushless motorization of the MECATOME T202 allows to work with constant torque over the whole speed range from 100 to 4000 RPM. The entire PRESI experience is concentrated in this most complete cutting machine on the market in its category.



## Touchscreen

- LCD color TFT display 4,3", 16/9
- Ergonomic and intuitive user interface
- Easy to use thanks to the micrometric display of lateral movement
- Many features, changes and adjustments of cutting parameters

## Sample carrier arm

The sample arm, adjustable in lateral position and in rotation, allows the attack of the sample from all angles.



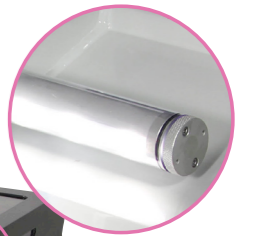
## PROTECTION HOOD LOCK FOR MAXIMUM SECURITY

The hood, made of metal frames, locks as soon as the engine starts and only unlocks when the grinding wheel stops.



## LED Lighting

Improves brightness and facilitates visual control during operation.



## TECHNICAL FEATURES



### MECATOME T202 cutting machine - Ref. 51750

HOOD	
Type	Metal frame and PETG
Safety	Lock during the cycle
MOTORIZATION - POWER SUPPLY	
Power	960 W
Power supply	110 - 230 V single phase 50 / 60 Hz
Engine control	Brushless motor control board
CUT-OFF WHEELS	
Type of cut-off wheels	Resinoid and diamond
Cut-off wheel size range	from Ø 75 to Ø 200 mm
Rotation speed	from 100 to 4000 RPM
Arbor size	12,7 mm
CONTROL	
Control interface	4.3 TFT color touch screen, 16/9
Security access	Can activate password protection
Programmability	Up to 3 programs
CUTTING	
Cutting mode	Manual or by gravity (weight / counter-weight)
X axis range	100mm X-axis movement of the sample carrier arm
Holders	Sample carrier arm accepts a wide variety of holders
LUBRICATION - COOLING	
Pump and tank	Integrated - Capacity 3,5L
Type of lubrication	Pump lubrication
Method of directing pumped coolant	A single alignable nozzle
Type of filtration	100µ washable fabric filter
ERGONOMICS	
Spray nozzle for cleaning	Integrated
Inside lighting	LED tube interior lighting IP68
Dimensions hood closed (in mm)	W = 535 / H = 410 / D = 590
Dimensions hood opened (in mm)	W = 535 / H = 750 / D = 590
Weight	55 kg

## Emergency stop button

Convenient and quick access to the machine emergency stop button to immediately stop its operation.



## ACCESSORIES

V shaped sample chuck



Ref. 51715

Vice chuck longitudinal cuts



Ref. 51717

Chuck for small samples (vice type)



Ref. 51713

Orientable chuck



Ref. 51156

Chuck for cylindrical sample



Ref. 51714

Irregular shaped sample chuck



Ref. 51716

Mini screw vice



Ref. 51722

Vice chuck longitudinal cuts (53 mm)



Ref. 51718

Set of 5 aluminium plates for samples sticking



Ref. 51162 - 51163

Set of 2 flanges



Ref. 51710 - 51711 - 51712

## STANDARD RESINOID CUT-OFF WHEELS

\* to be used with reduction ring ref. 51324

REF.	DESIGNATION	DIAMETER	MATERIALS	HARDNESS
01040	Type A - Abrasive Al <sub>2</sub> O <sub>3</sub>	Ø 100 x 0,3 x 12,7 mm	Low carbon, mild and extra mild	100 - 350 Hv
01046	Type AO - Abrasive Al <sub>2</sub> O <sub>3</sub>	Ø 125 x 0,5 x 12,7 mm	Treated steels, stainless steels, refractory metals, alloyed cast irons	300 - 500 Hv
01043		Ø 150 x 0,5 x 12,7 mm		
01002		Ø 200 x 1,6 x 25,4 mm*		
01001	Type AOF II - Abrasive Al <sub>2</sub> O <sub>3</sub>	Ø 200 x 0,8 x 25,4 mm*	Rubber bonded cut-off wheel, sintered steels, hard metal layers	80 - 300 Hv
01041	Type C - Abrasive SiC	Ø 100 x 0,3 x 12,7 mm	Aluminium, copper and alloys, non ferrous metals, titanium and alloys	30 - 350 Hv
01005	Type MNF - Abrasive SiC	Ø 200 x 1,6 x 25,4 mm*	Aluminium, copper and alloys, non ferrous metals, titanium and alloys	30 - 350 Hv
01060	Type S - Abrasive SiC	Ø 180 x 0,5 x 25,4 mm*	Treated steels, with fragile coatings, tough materials	450 - 700 Hv

## DIAMOND CUT-OFF WHEELS

\* to be used with reduction ring ref. 01092

REF.	DESIGNATION	DIAMETER	MATERIALS	BOND
02030	Type LM	Ø 75 x 0,3 x 12,7 mm	Ceramics, composites, tungsten carbide, alumina, sintered carbides, minerals, concretes.	<b>Metallic bond</b> : very polyvalent cut-off wheel, normal concentration, to cut hard materials.
02031		Ø 100 x 0,3 x 12,7 mm		
02034		Ø 125 x 0,5 x 12,7 mm		
02036		Ø 150 x 0,6 x 12,7 mm		
02055		Ø 175 x 0,7 x 12,7 mm		
02038		Ø 200 x 0,9 x 32 mm*		
02057	Type LM+	Ø 75 x 0,3 x 12,7 mm	Ceramics (large sections), tungsten carbide, silicon carbide, plasma deposit, mounted samples, refractory materials, minerals, concretes.	<b>Metallic bond</b> : high concentration disc to cut hard materials.
02060		Ø 100 x 0,3 x 12,7 mm		
02063		Ø 125 x 0,5 x 12,7 mm		
02064		Ø 150 x 0,6 x 12,7 mm		
02066		Ø 175 x 0,7 x 12,7 mm		
02040		Ø 200 x 0,9 x 32 mm*		
02058	Type LR	Ø 75 x 0,5 x 12,7 mm	Composites, plasma deposit, ceramics, electronic components.	<b>Resin bond</b> : high concentration disc, advised when you want the best cutting quality. To cut hard and fragile materials.
02033		Ø 100 x 0,5 x 12,7 mm		
02035		Ø 125 x 0,5 x 12,7 mm		
02037		Ø 150 x 0,6 x 12,7 mm		
02067		Ø 175 x 0,7 x 12,7 mm		
02041		Ø 200 x 0,9 x 32 mm*		

## CBN CUTTING DISCS

\* to be used with reduction ring ref. 51331

REF.	DESIGNATION	DIAMETER	MATERIALS	BOND
02059	Type NB	Ø 75 x 0,5 x 12,7 mm	Cast irons, treated steels, hard and high speed steels.	<b>Resin bond</b> : high concentration disc of boron nitride for cutting the materials mentioned here.
02062		Ø 100 x 0,5 x 12,7 mm		
02050		Ø 125 x 0,5 x 12,7 mm		
02065		Ø 150 x 0,6 x 12,7 mm		
02056		Ø 175 x 0,7 x 12,7 mm		
02039		Ø 200 x 0,9 x 32 mm*		



FIND OUT MORE AT  
[WWW.PRESI.COM](http://WWW.PRESI.COM)

